

# DEFENSE<sup>2</sup><sub>TM</sub>

Security Hardware



DEFENSE2.COM

***By Supply Side***<sup>®</sup>  
CREATING SUPPLY CHAIN EXCELLENCE

THE NATION'S #1 LOCK PROVIDER  
FOR THE SELF-STORAGE INDUSTRY.

**Supply Side**<sup>®</sup>  
CREATING SUPPLY CHAIN EXCELLENCE



WINNER  
**ISS** 2025  
INSIDE SELF-STORAGE. **BEST OF BUSINESS**  
BEST RETAIL PRODUCT

 SELF STORAGE ASSOCIATION  
**MEMBER**

FREE SHIPPING ON ORDERS \$250 OR MORE! \*Exceptions May Apply



In the self-storage industry, security isn't a luxury -  
**IT'S THE GAME-WINNING PLAY.**

That's why Defense<sup>2</sup>'s locks & latches are built like a linebacker:  
**STRONG, UNBREAKABLE, AND READY  
TO SHUT DOWN ANY THREAT.**

**LOCKS**

**CYLINDER LOCKS.....04**  
**DISC LOCKS.....06**  
**PADLOCKS.....09**  
**COUPLER LOCK.....11**

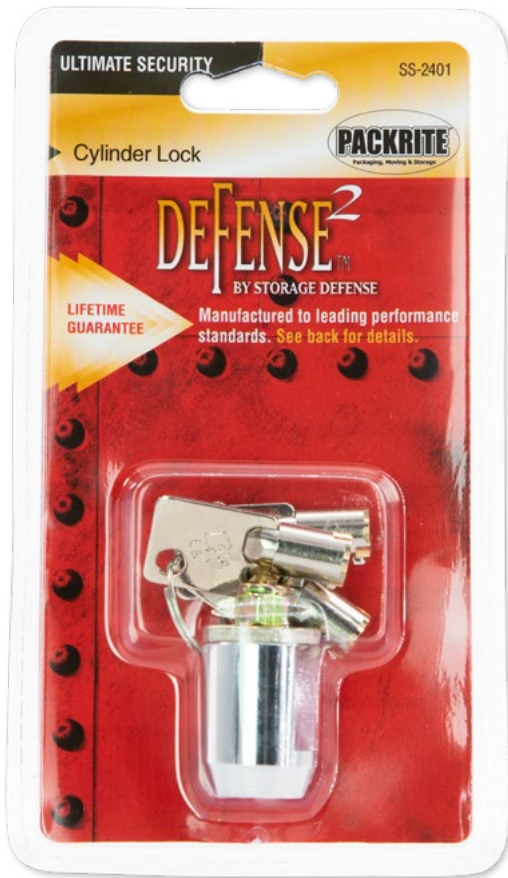
**LATCHES.....13**

**ACCESSORIES.....16**

**MANAGER LOCKS .....17**

**Distributed by Supply Side  
32125 Solon Road, Suite 200  
Solon, Ohio 44139**

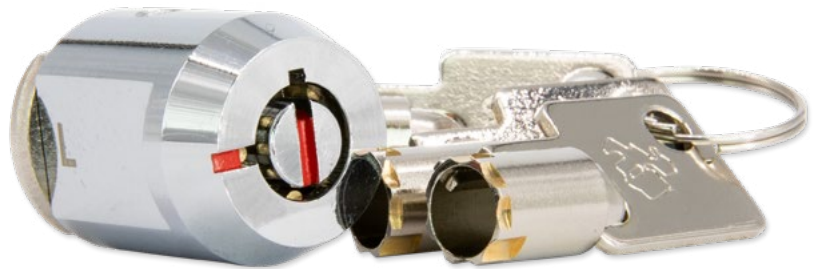
# CYLINDER LOCKS



## SS-2401 CYLINDER LOCK (19MM)

Qty: 4/Box

- Long, 19mm cylinder lock
- Weather resistant solid brass body
- Pick resistant precision tumbler
- 3 fortified keys included - each difficult to duplicate
- Sealed in retail ready packaging
- 1 overlock key included in each box
- **Lifetime guarantee**



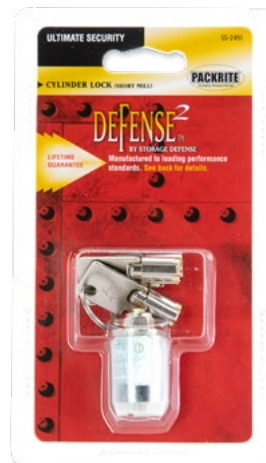
All Defense<sup>2</sup> cylinder locks contain 21 pins, allowing for thousands of key combinations, and are compatible with other manufacturers' latches.



## SS-2402 CYLINDER LOCK (19MM) TWIN SET

Qty: 4/Box

- Same superior quality and specifications as SS-2401
- Keyed alike for convenience
- 4 keys total (2 sets of 2)
- 1 overlock key in each box
- **Lifetime guarantee**



## SS-2451 CYLINDER LOCK (17MM)

Qty: 4/Box

- Short, 17mm cylinder lock
- Weather resistant solid brass body
- Pick resistant precision tumbler
- 3 fortified keys included - each difficult to duplicate
- Sealed in retail ready packaging
- 1 overlock key in each box
- **Lifetime guarantee**

Short Mill



**Pt** PLATINUMSeries

Protect Every Unit Like It's  
**GAME DAY**

Plug-N-Lock  
Universal Fit!

PERFECTFIT™  
DEFENSE<sup>2</sup>™

Supply Side Cleveland, OH

21 pins allow  
thousands of  
key changes.

Latch shown:  
SS-487S (pg. 14)

**SS-2501  
PLUG-N-LOCK CYLINDER LOCK**

Qty: 4/Box

- 21 pins allow 1,000's of key changes
- Fits other manufacturers' latches
- No need to drill holes in your doors, easy plug-in installation
- Weather resistant solid brass body
- Pick resistant precision tumbler
- 3 fortified keys included - each difficult to duplicate
- Sealed in retail ready packaging
- 1 overlock key included in each box
- Lifetime guarantee



**FLAT BACK**  
No Screws,  
No Problem!



# DISC LOCKS



## SS-870 DISC LOCK

Qty: 4/Box

- 2-3/4" keyed disc lock
- Pick resistant 5 pin precision tumbler
- Over 3,000 key changes
- Chrome plated stainless steel with hardened shackle
- Weather resistant. 4 drain holes prevent rust and corrosion
- 2 fortified keys included
- Sealed in retail ready packaging
- **Lifetime guarantee**

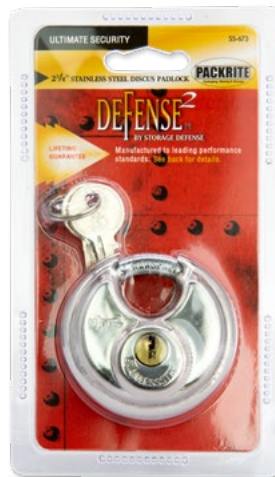


Keyed Alike

## SS-872 KEYED ALIKE DISC LOCK TWIN SET

Qty: 4/Box

- Same superior quality & specifications as SS-870
- Keyed alike for convenience
- 4 keys total (2 sets of 2)
- Great for multi-unit customers
- **Lifetime guarantee**



## SS-673 DISC LOCK

Qty: 4/Box

- 2-3/8" keyed disc lock
- Pick resistant 5 pin precision tumbler
- Over 3,000 key changes
- Chrome plated stainless steel with hardened shackle
- 2 fortified keys included
- Sealed in retail ready packaging
- **Lifetime guarantee**

Weather Resistant.  
4 Drain Holes Prevent  
Rust and Corrosion.



# DISC LOCKS

**Pt PLATINUMSeries**



## SS-970 DISC LOCK

Qty: 4/Box

- 2-3/4" keyed disc lock
- 6 anti-pick mushroom pin tumbler allows over 12,000 key changes
- Brushed stainless steel with hardened shackle
- Weather resistant. 4 drain holes prevent rust and corrosion
- 3 secure-grip keys included
- Sealed in retail ready packaging
- **Lifetime guarantee**



Keyed Alike

## SS-972 KEYED ALIKE DISC LOCK TWIN SET

Qty: 4/Box

- Same superior quality & specifications as SS-970
- Keyed alike for convenience
- 4 keys total (2 sets of 2)
- Great for multi-unit customers
- **Lifetime guarantee**



## SS-921 TUBULAR KEY DISC LOCK

Qty: 4/Box

- 2-3/4" tubular key disc lock
- Brushed stainless steel with hardened shackle
- Pick resistant 21 pin precision tumbler
- Weather resistant. 4 drain holes prevent rust and corrosion
- 2 secure-grip tubular keys included
- Sealed in retail ready packaging
- **Lifetime guarantee**



2 Secure-Grip Tubular keys Included



# Lock Down Units Like An ALL-PRO DEFENSE

with Defense2's Platinum Series Combination Lock

## SS-978 COMBINATION DISC LOCK

Qty: 4/Box

- 2-3/4" combination lock
- Brushed stainless steel
- Weather resistant. 3 drain holes prevent rust and corrosion
- Easy combination setup
- 10,000 combination options
- Sealed in retail ready packaging
- Lifetime guarantee

Hardened  
Shackle



10,000 Different  
Combinations



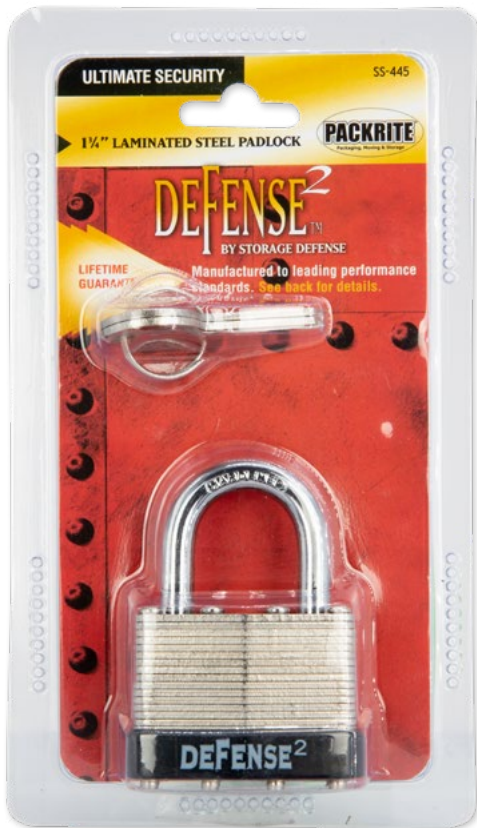
DEFENSE<sup>2</sup><sup>TM</sup>

Pt PLATINUMSeries

**FREE SHIPPING**  
ON ORDERS \$250 OR MORE!

*\*Exceptions May Apply*

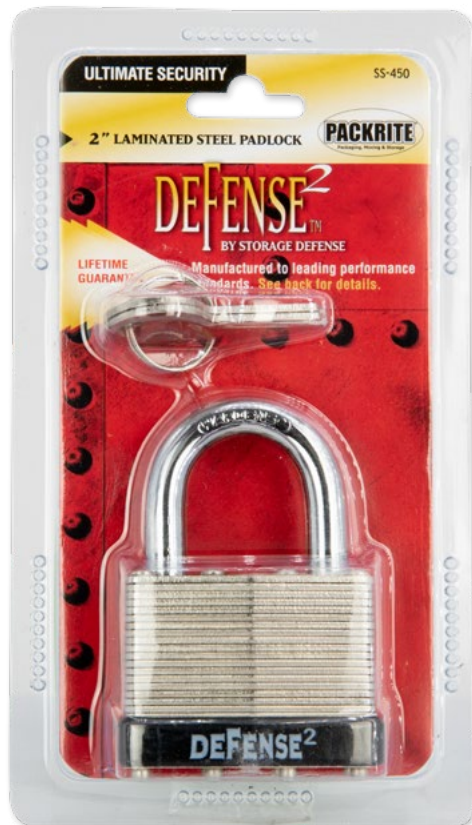
# PADLOCKS



## SS-445 LAMINATED STEEL PADLOCK

Qty: 4/Box

- 1-3/4" laminated padlock
- Rugged, laminated steel, riveted body plates
- Double-locking heel and toe for added security
- Pin tumbler mechanism for added pick resistance
- Protective plastic bumper
- 2 fortified keys included
- Sealed in retail ready packaging
- **Lifetime guarantee**



## SS-450 LAMINATED STEEL PADLOCK

Qty: 4/Box

- 2" laminated padlock
- Rugged, laminated steel, riveted body plates
- Double-locking heel and toe for added security
- Pin tumbler mechanism for added pick resistance
- Protective plastic bumper
- 2 fortified keys included
- Sealed in retail ready packaging
- **Lifetime guarantee**



# PADLOCKS



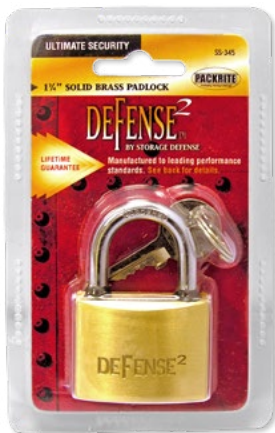
## SS-178D COMBINATION BRASS PADLOCK

Qty: 4/Box

- 2" resettable combination lock
- Weather resistant solid brass body
- 1" hardened steel shackle
- Double-locking heel and toe for extra protection
- 10,000 personalized combinations
- Sealed in retail ready packaging
- **Lifetime guarantee**



Setting Custom 4-Digit Combinations is Easy. Reset Tool Included.

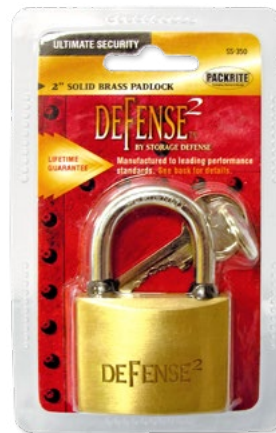


## SS-345 BRASS PADLOCK

Qty: 4/Box

- 1-3/4" brass padlock
- Solid brass body for extreme weather resistance
- Hardened steel shackle
- Pick resistant precision tumbler
- Sealed in retail ready packaging
- **Lifetime guarantee**

1-3/4 inches



## SS-350 BRASS PADLOCK

Qty: 4/Box

- 2" brass padlock
- Solid brass body for extreme weather resistance
- Hardened steel shackle
- Pick resistant precision tumbler
- Sealed in retail ready packaging
- **Lifetime guarantee**

2 inches



# LOCKDOWN DEFENSE

Enhanced Security and  
Protection for Trailers,  
RV's, Boats & More.



## SS-UTCL UNIVERSAL TRAILER COUPLER LOCK

Qty: 4/Box

- Designed for 1-7/8", 2", and 2-5/16" trailer coupler ball
- Stainless steel with a powder coat finish and zinc alloy tubular core provide weather resistance
- Highly visible theft deterrent
- 11 ratcheting lock positions insures snug fit
- Includes 2 keys
- Placed on retail ready hanging card

Weather  
Resistant



# DEFENSE<sup>2</sup>

# ONE CLICK AWAY

Online Ordering Made Effortless

— Customized management approval  
ordering process

— Branded web portal  
(with customized mix of products)

— Wholesale and MSRP pricing

— Historical reporting

**Order Anywhere,  
Anytime!**



**SupplySide.com**

**Supply Side**  
CREATING SUPPLY CHAIN EXCELLENCE

# NEW!

THE FOOTBALL LATCH

**TOUGH**  
**ADAPTABLE**  
DESIGNED TO PROTECT



New!

**SS-FBL1**  
**FOOTBALL STYLE LATCH**

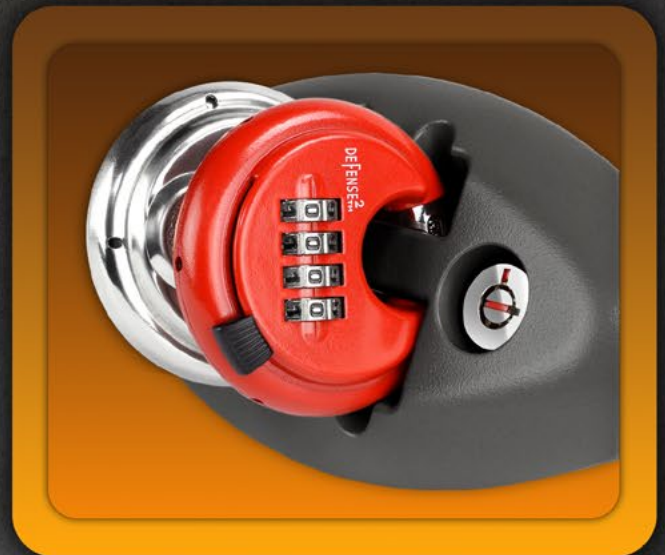
Qty: 1/Each

- 8-1/4" x 3-3/4"
- Zinc alloy with steel
- Accepts short mill cylinder locks (10mm), disc locks and/or padlocks

- Commonly used for select Trac-Rite, Janus, and D.B.C.I doors
- 3 bolt mounting
- Hardware included

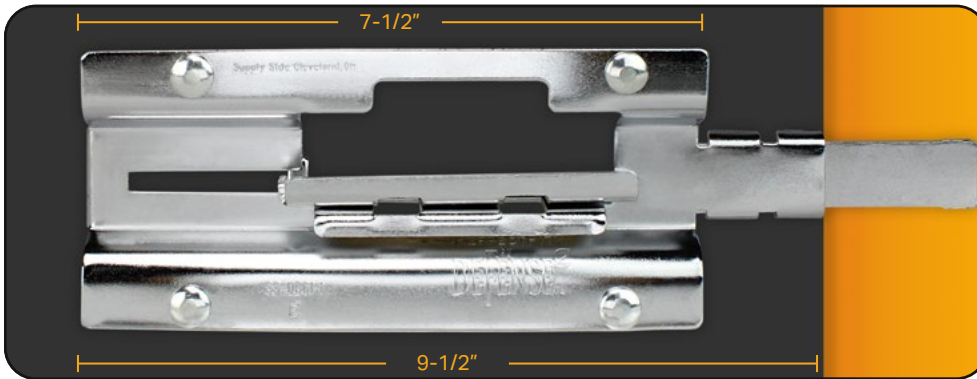


Compatible with different lock styles



Great for manager overlocks

## LATCHES

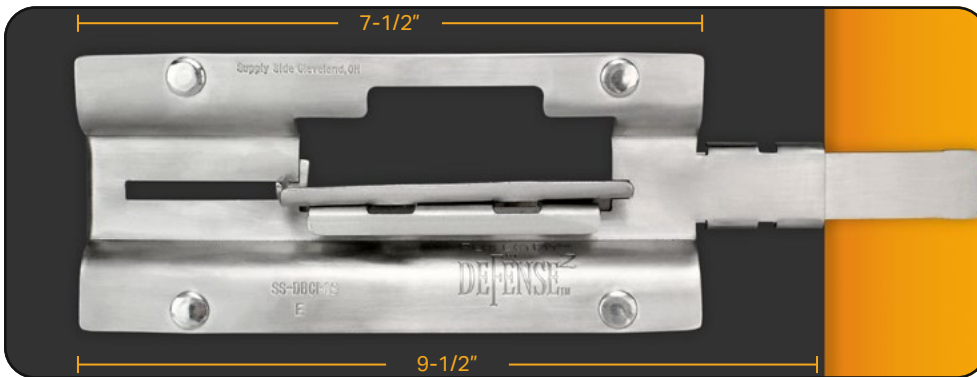


Designed to fit D.B.C.I., Janus, Betco, Pilot, US Door, & Porvene.

### SS-DBCI-1 DBCI LATCH ZINC-PLATED

Qty: 1/Each

- 7-1/2" x 3-1/2"
- Weather resistant zinc plating
- 4 bolt mounting
- Hardware included



Designed to fit D.B.C.I., Janus, Betco, Pilot, US Door, & Porvene.

### SS-DBCI-1S DBCI LATCH STAINLESS STEEL

Qty: 1/Each

- 7-1/2" x 3-1/2"
- Weather resistant stainless steel
- 4 bolt mounting
- Hardware included



Designed to fit D.B.C.I., Janus, Betco, Pilot, Trac-Rite, Trachte, US Door, & Porvene.

### SS-487 CYLINDER LATCH ZINC-PLATED

Qty: 1/Each

- 7-7/8" x 3-5/8"
- Weather resistant zinc plating
- 4 bolt mounting
- Hardware included



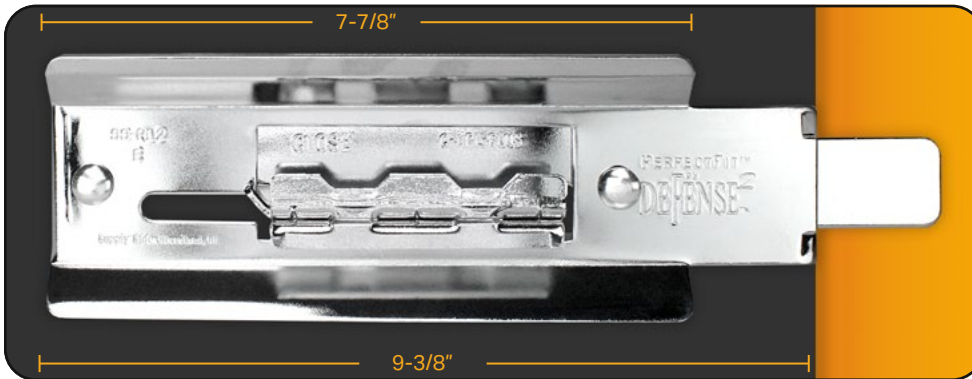
Designed to fit D.B.C.I., Janus, Betco, Pilot, Trac-Rite, Trachte, US Door, & Porvene.

### SS-487S CYLINDER LATCH STAINLESS STEEL

Qty: 1/Each

- 7-7/8" x 3-5/8"
- Weather resistant stainless steel
- 4 bolt mounting
- Hardware included

# LATCHES

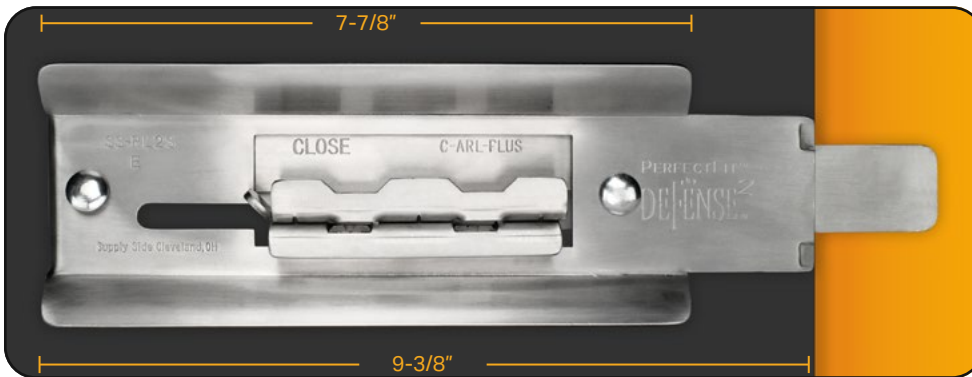


## SS-RL2 ROLL-LITE LATCH WITH THICK FLANGE ZINC-PLATED

Qty: 1/Each

- 9-3/8" x 3-5/16"
- Weather resistant zinc plating
- 2 bolt mounting
- Hardware included

Designed to fit Wayne Dalton, Roll-Lite, Roll-Right, Trac-Rite, & Epic.

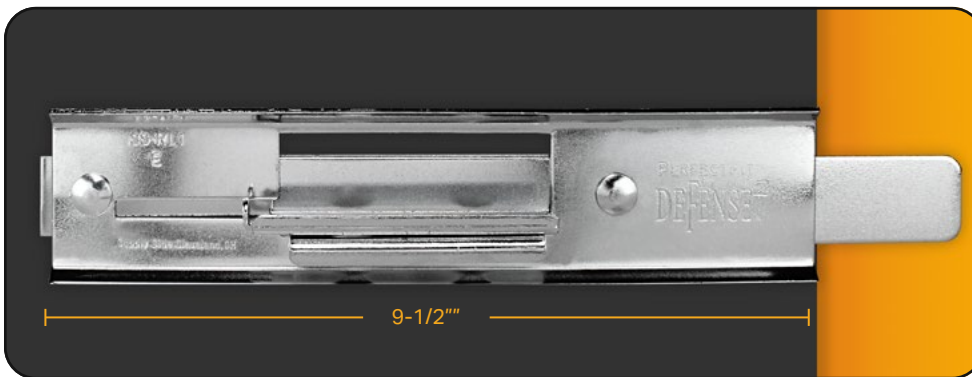


## SS-RL2S ROLL-LITE LATCH WITH THICK FLANGE STAINLESS STEEL

Qty: 1/Each

- 9-3/8" x 3-5/16"
- Weather resistant stainless steel
- 2 bolt mounting
- Hardware included

Designed to fit Wayne Dalton, Roll-Lite, Roll-Right, Trac-Rite, & Epic.

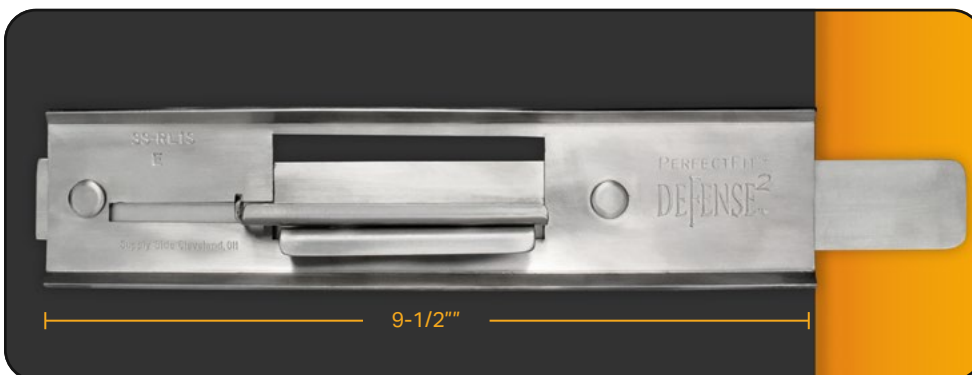


## SS-RL1 ROLL-LITE LATCH ZINC-PLATED

Qty: 1/Each

- 9-1/2" x 2-1/4"
- Weather resistant zinc plating
- 2 bolt mounting
- Hardware included

Universal fit for flat and corrugated surfaces, including Trachte & US Door.



## SS-RL1S ROLL-LITE LATCH STAINLESS STEEL

Qty: 1/Each

- 9-1/2" x 2-1/4"
- Weather resistant stainless steel
- 2 bolt mounting
- Hardware included

Universal fit for flat and corrugated surfaces, including Trachte & US Door.



**SS-CLATCH  
CHICAGO LATCH**

Qty: 1/Each

- Includes cover
- Suitable for use on many gates, garage doors, swing doors, and sectional doors.
- Strike not included



Latch cover

**ACCESSORIES**



**SS-489-BK  
OVERLOCK PLATE**

Qty: 1/Each

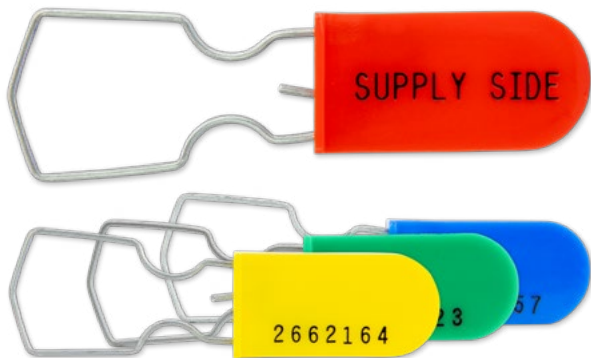
- 2-1/8" x 1-7/8"
- Stamped with "PLEASE SEE MANAGER"
- Compatible with latches SS-487 and SS-487S



**SS-003  
HEAVY DUTY SAFETY LOCKOUT CLAMP**

Qty: 5/box

- Use as manager's overlack when latch accomodates only one padlock



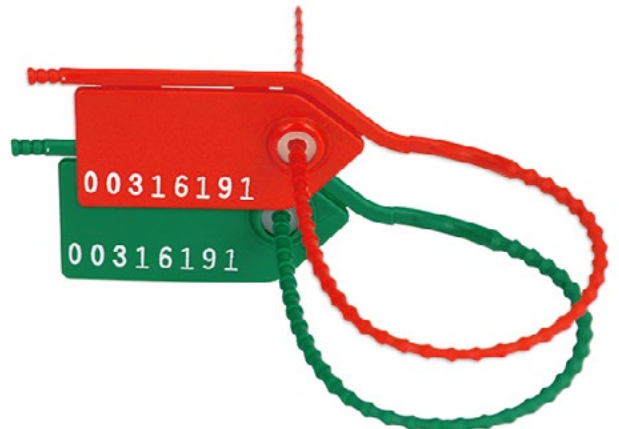
**COLORED PADLOCK SEALS**

Qty: 100/Pack

- Red: SS-002R
- Green: SS-002G
- Yellow: SS-002Y
- Blue: SS-002B

*Scored & breakable also available in green.*

- SS-004G



**8 INCH ALL PURPOSE SEALS**

Qty: 200/Box

- Red: SS-MPT8R
- Green: SS-MPT8G

DEFENSE<sup>2</sup><sup>TM</sup>

Combination  
MANAGER  
LOCKS

The  
GAME  
WINNING  
PLAY!



SS-6057  
Red



SS-6035  
Green



**COMBINATION MANAGER  
DISC LOCK**

Qty: 6/Box

- 2-3/4" combination lock
- Weather resistant. 3 drain holes prevent rust and corrosion
- Easy combination setup
- 10,000 combination options
- Available in red and green

## MANAGER LOCKS



### COLORED ZINC MANAGER PADLOCKS

Qty: 6 locks, 6 keys/box

- 1-1/2" zinc-plated manager padlock
- Great for coding storage units for various managerial tasks
- Bulk packed & keyed alike. No retail packaging.

#### 4 AVAILABLE COLORS

- Yellow: SS-7140
- Blue: SS-7340
- Red: SS-7240
- Green: SS-7420



### COLORED NYLON MANAGER PADLOCKS

Qty: 6 locks, 6 keys/box

- 1-1/2" nylon manager padlock
- Great for coding storage units for various managerial tasks
- Bulk packed & keyed alike. No retail packaging.

#### 4 AVAILABLE COLORS

- Yellow: SS-7640
- Blue: SS-7670
- Red: SS-7660
- Green: SS-7650

### SS-3240 BRASS MANAGER PADLOCK

Qty: 6 locks, 6 keys/box

- 1-1/2" solid brass manager padlock
- Weather and pick resistant
- Case-hardened steel shackle
- Bulk packed & keyed alike. No retail packaging.
- Warning message:  
"WARNING Unauthorized Removal of this Lock  
Constitutes Breaking and Entering"



## MANAGER LOCKS



### COLORED STAINLESS STEEL MANAGER DISC LOCKS

Qty: 6 locks, 6 keys/box

- 2-3/4" stainless steel manager disc lock
- 4 drain holes prevent rust and corrosion
- Great for coding storage units for various managerial tasks
- Bulk packed & keyed alike. No retail packaging.

#### 4 AVAILABLE COLORS

- Yellow: SS-5170
- Blue: SS-5470
- Red: SS-5270
- Green: SS-5370



### COLORED NYLON MANAGER CYLINDER LOCKS

Qty: 10 locks, 1 key/Box

- Great for coding storage units for various managerial tasks
- Bulk packed & keyed alike. No retail packaging.

#### 4 AVAILABLE COLORS

- Yellow: SS-CLKAY
- Blue: SS-CLKAB
- Red: SS-CLKAR
- Green: SS-CLKAG

### SS-CLKEY EXTRA KEY

Qty: 1/Each

- Fits all colors of manager cylinder locks



Keyed Alike  
for  
convenience!

# TACKLE STORAGE SECURITY. SCORE BIG WITH YOUR BRAND.



Custom branded security hardware, and other products such as tape, protective covers, and more.

Protect your customers and build your brand at the same time!



➔ **READY TO SCORE BIG?**



Visit [yourlogohere.xpotential.co/](https://yourlogohere.xpotential.co/)  
or Call 800.284.7357



# Supply Side®

CREATING SUPPLY CHAIN EXCELLENCE

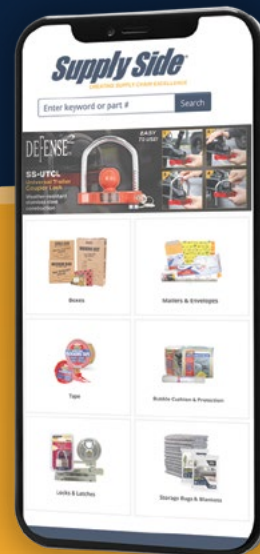


***Bringing All-Star  
Products to Self-Storage***

**Sign Up &  
Order Online**



***Quick. Easy.  
Order Anywhere, Anytime!***



**SupplySide.com**

**800.284.7357**

THE UNDISPUTED

# MVP

Meet the cylinder lock that takes security to the championship level. Engineered for strength, precision, and reliability, protecting every unit like an elite defense. Don't settle for anything less than a lock that's ready for the big game.



SS-2501

DEFENSE<sup>2</sup><sup>TM</sup>

#1 Defense in the Nation

*By Supply Side*



**USER-FRIENDLY**

To lock, just insert and push.

*It's that easy!*



Keyless  
Installation

